

Only smart people
read the manual.



Contents

Getting Started	1
Installing the FreeAgent Tools	1
Using the FreeAgent Tools Icons	9
Using the System Tray Icon	10
Disconnecting the FreeAgent Drive	10
File Encryption	12
Creating a Password	12
Encrypting a File	13
Decrypting a File	15
Drag-and-Drop Encryption and Decryption	16
Using Drag and Drop to Encrypt	16
Using Drag and Drop to Decrypt	17
Managing Your Drives	19
Synchronizing Folders	20
Using the Default Sync Settings	20
Selecting Your Own Folders for Sync	22
Editing your Sync Settings	24
Changing Folder Selection	25
Changing Sync Mode and Add and Replace Rules	25
Selecting “Ask First” for Add and Replace Rules	26
Synchronizing Now Manually	28
Viewing Sync Status	28
Accessing your Synchronized Folders	29
Using Ceedo	33
Using Ceedo for the First Time	33
Using the Ceedo Application	37
Using the Ceedo Compact Bar	37
Using the Ceedo System Tray Icon	38
Distinguishing a Ceedo Window	40
Utilities	41
Running Drive Diagnostics	41

Adjusting the Drive Sleep Interval	43
Adjusting the Drive Lights	45
Index	i

Getting Started

When you purchase your FreeAgent™ drive, the Ceedo software is already installed on it. Ceedo provides a portable working environment you use to carry selected applications, documents, email, and browsers with you on your FreeAgent drive and run them on any computer.

You can use the FreeAgent drive with Ceedo immediately. However, before you can use FreeAgent's Folder Sync and Encryption features, you must install the FreeAgent Tools on your computer. You use Ceedo to do this.

Note: Some sections of this manual apply to the Encryption feature. The Encryption feature is not available in all regions. If your product does not offer Encryption, the Encryption sections of the manual will not apply to your product.

Installing the FreeAgent Tools

Step 1: Connect your FreeAgent drive to your computer.

Note: FreeAgent Go users must be sure to plug in BOTH USB connectors.

The AutoStart window opens



Figure 1: AutoStart Window in Windows XP

Note: Remember that drive letters, available AutoStart options, and AutoStart windows differ depending on your operating system.

Step 2: Select **Start Ceedo** and click **OK**.

The **Welcome to Ceedo** window opens:



Figure 2: Welcome to Ceedo

Step 3: Select a language from the dropdown menu and click **OK**.

The **Ceedo License Agreement** window opens:

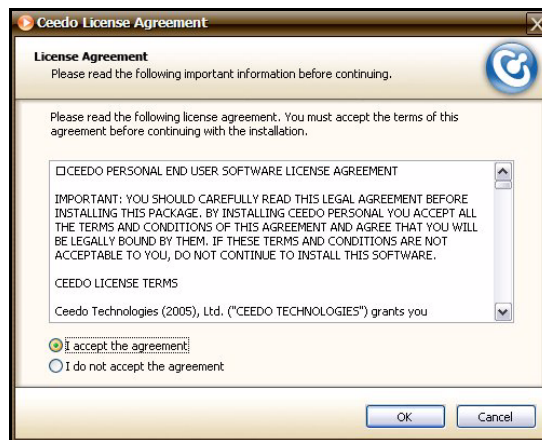


Figure 3: Ceedo License Agreement

Step 4: Select **I accept the agreement** and click **OK**.

If Ceedo has released a more current version of its software than the version installed on your FreeAgent drive, a **Ceedo Update** window opens:



Figure 4: Update Ceedo

Step 5: Click **Yes** to install the latest version of Ceedo.

The **Installing Ceedo** window opens:



Figure 5: Installing Ceedo

When the updated Ceedo software has been installed, the **Loading Ceedo** window opens:



Figure 6: Loading Ceedo

Note: If you are unable to access the Ceedo Easy-Access menu, you may have a firewall conflict. For further information and assistance, go to <http://www.ceedo.com/>.

When Ceedo has loaded, the **Welcome to Ceedo** window and the Ceedo Easy-Access menu both open:



Figure 7: Ceedo Windows

Note: If you are unable to access the Ceedo Easy-Access menu, you may have a firewall conflict. For further information and assistance, go to <http://www.ceedo.com/>.

The **Welcome to Ceedo** window describes the various features accessible to you via the Ceedo Easy-Access menu. You can choose whether to display this window each time you open Ceedo:



Figure 8: Welcome to Ceedo

Note: For more information on using Ceedo, see the **Ceedo** chapter.

Step 6: Uncheck **Show the Welcome screen when Ceedo starts** at the bottom of the Welcome window if you don't want to see this screen again.

The Ceedo Easy-Access menu contains a link to the FreeAgent Tools installer:

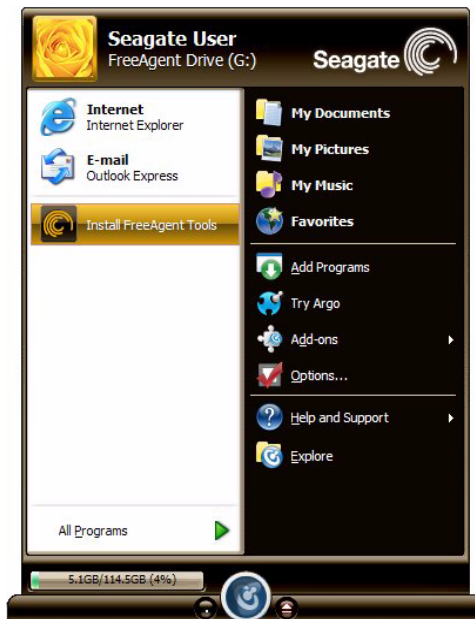


Figure 9: Ceedo Easy-Access Menu

Step 7: Click **Install FreeAgent Tools**.

The **Choose Setup Language** window opens:



Figure 10: Choose Setup Language

Step 8: Select a language for this installation from the dropdown menu and click **OK**.

The **Welcome** window opens:

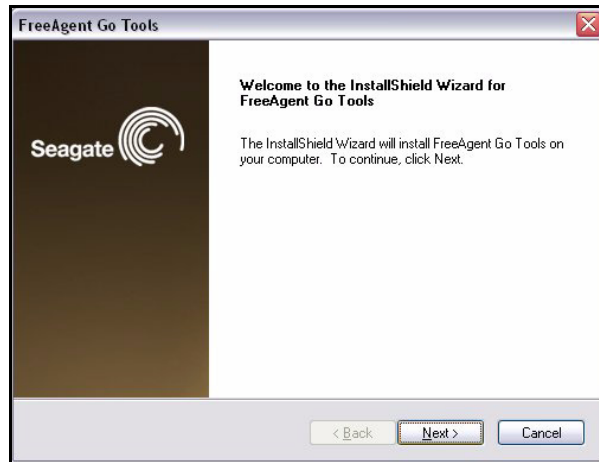


Figure 11: Welcome

Step 9: Click **Next**.

The **License Agreement** window opens:

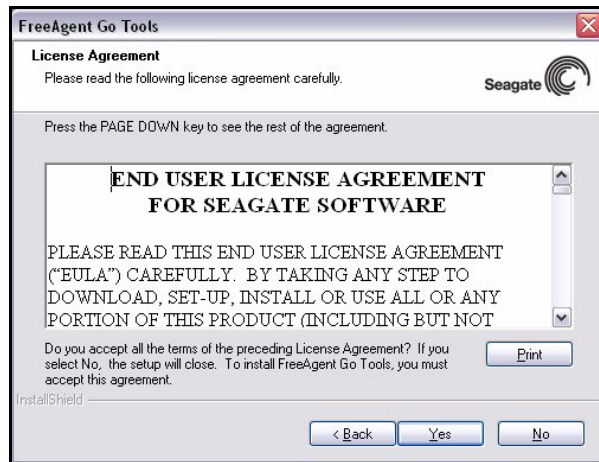


Figure 12: License Agreement

Step 10: Select **Yes** if you agree to the terms of the License Agreement.

The **Choose Destination Location** window opens:

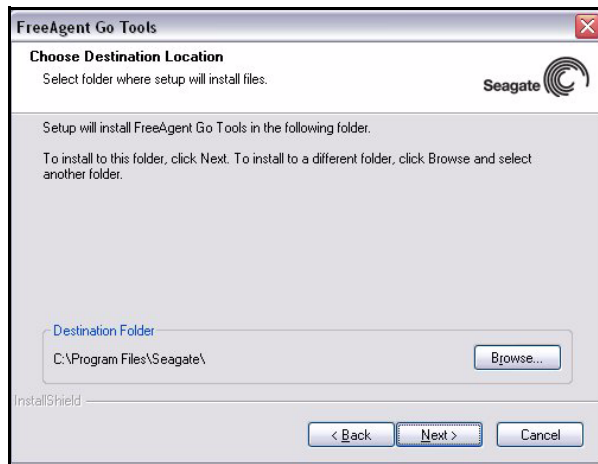


Figure 13: Choose Installation Folder

Step 11: Click **Next** to accept the default installation folder

— OR —

Click **Browse** to select a different installation folder.

If you click **Browse**, a **Choose Folder** window opens:

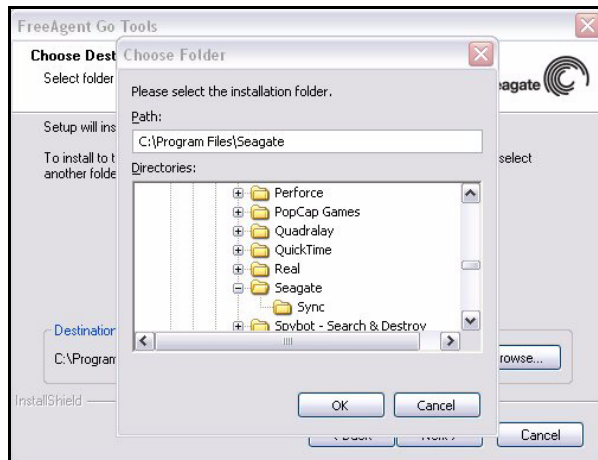


Figure 14: Change Installation Folder

Browse to the desired folder and click **OK** in the **Choose Folder** window, then **Next** in the **Choose Destination Location** window.

The **Setup Status** window opens:

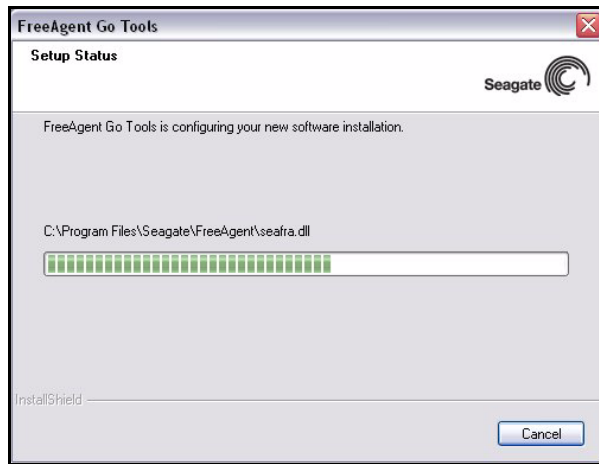


Figure 15: Setup Status

When the setup is complete, the **Registration** window opens:



Figure 16: Registration

Step 12: If you wish, click **Register** to go to the Seagate registration website and register your FreeAgent drive.

Step 13: Click **Next**.

The **InstallShield Wizard Complete** window opens:

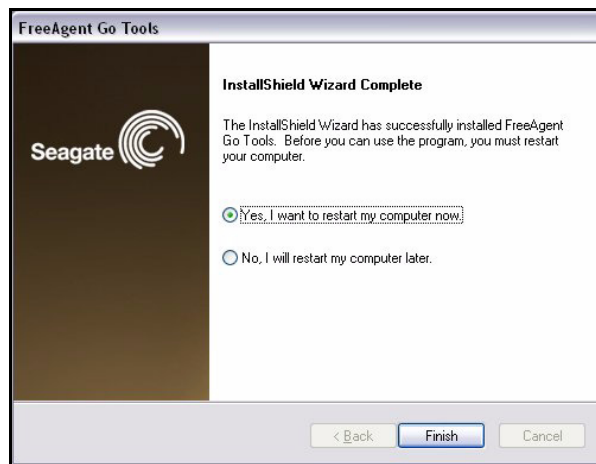


Figure 17: Installation Complete

Step 14: Decide whether to restart your computer now or later and click **Finish**.

After a restart, your FreeAgent drive is now ready to use.

Note: Although most features on your FreeAgent drive will work without a restart, a restart is required for full use of the FreeAgent software.

Using the FreeAgent Tools Icons

After you've installed the FreeAgent Tools software on your computer, FreeAgent Tools icons are placed in two locations:

In your system tray:

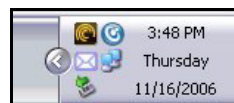


Figure 18: FreeAgent Tools System Tray Icon

On your desktop:



Figure 19: FreeAgent Tools Desktop Icon

- Double-click on either icon to launch the FreeAgent application.

Using the System Tray Icon

You can use the system tray FreeAgent Tools icon to check the connection status of your FreeAgent drive and to access the drive features.

Step 1: Roll your mouse over the system tray icon to check the connection status:



Figure 20: System Tray Icon Mouseover Information

The information popup confirms the drive's connection status and identifies the drive letter.

Step 2: Click on the system tray icon to display the FreeAgent popup menu:

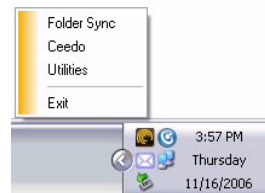


Figure 21: System Tray Popup Menu

Step 3: Select the feature you want to access or select **Exit** to close the FreeAgent system tray icon (the FreeAgent application remains open).

Disconnecting the FreeAgent Drive

To disconnect your FreeAgent drive, you must eject Ceedo:

Step 1: Right-click the Ceedo icon in the system tray.

The Ceedo menu pops up:

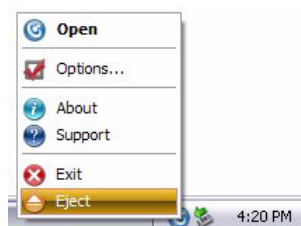


Figure 22: Ceedo System Tray Popup Menu

Step 2: Select Eject.

The **Ejecting Ceedo** window opens to confirm that you want to eject Ceedo:

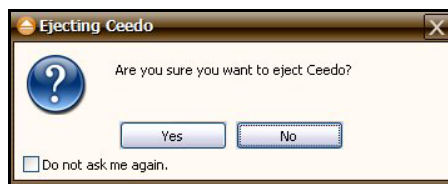


Figure 23: Ejecting Ceedo Confirmation Window

Step 3: Click Yes.

The **Ejecting Ceedo** progress window opens:



Figure 24: Ejecting Ceedo Progress Window

When Ceedo has been ejected, the **Safe to Remove Hardware** popup appears in your system tray.



Figure 25: Safe to Remove Hardware Popup

Step 4: Disconnect the FreeAgent drive from your computer.

File Encryption

Note: *This section of the manual applies to the Encryption feature. The Encryption feature is not available in all regions. If your product does not offer Encryption, this section of the manual does not apply to your product.*

File encryption prevents others from accessing your data without your approval. Encryption uses a password you create to modify a file so that it cannot be opened until it's decrypted with that password. You can encrypt a file directly from your desktop or from an Explorer window; you don't have to open the FreeAgent™ software in order to use this feature.

The encryption feature is not physically part of the FreeAgent application. Instead, it's accessed through a right-click dropdown menu.

Encryption works only at the file level. You cannot encrypt folders, nor can you encrypt multiple files at one time. However, you **can** put multiple files and even folders into a compressed file and then encrypt the compressed file.

When you encrypt a file, a second version of the file that's unreadable without being decrypted is produced in the location containing the original file. **To complete the encryption process, you must delete the original, unencrypted version.**

When you decrypt a file, an unencrypted version is produced in the location containing the encrypted version. This version can now be opened and edited and then encrypted again.

Note: *You cannot encrypt or decrypt a file in a folder within Ceedo (for example, **My Documents**).*

Creating a Password

An encryption password must meet these requirements:

1. It must contain between 12 and 64 characters.
2. It must contain both letters and numbers.
3. It can contain any printable characters, including spaces.

If you try to enter a password that does not meet these criteria, a window opens to remind you:

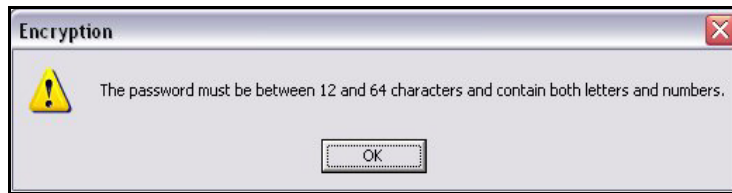


Figure 1: Encryption Password Information Window

Note: A forgotten encryption password cannot be recovered, so be sure to choose a password you can remember easily or record and store it in a safe place.

Encrypting a File

To encrypt a file,

Step 1: Right-click on the file.

Step 2: Select **Encrypt** on the dropdown menu:

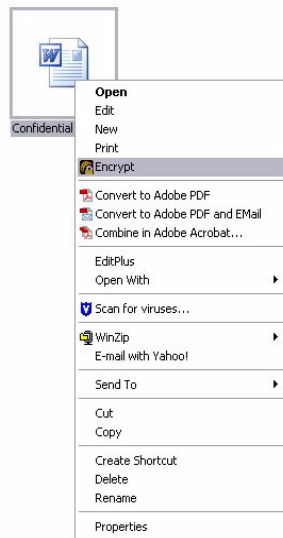


Figure 2: Encrypt Menu

The **Seagate Encryption** window opens:

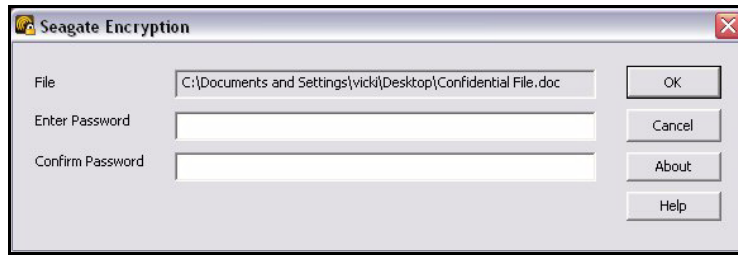


Figure 3: Seagate Encryption Window

Step 3: Enter and confirm a password and click **OK**.

If you've already encrypted this file before, the previously encrypted version remains on your computer. You're asked permission to replace the existing version with this more current version:

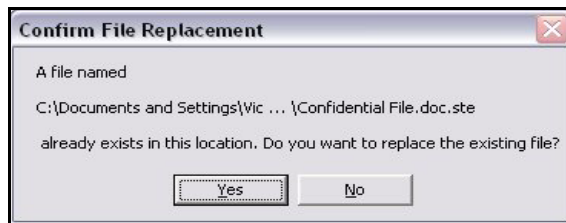


Figure 4: Encryption File Replacement

Step 4: Click **Yes**.

The **Encryption** window displays the progress of the encryption:

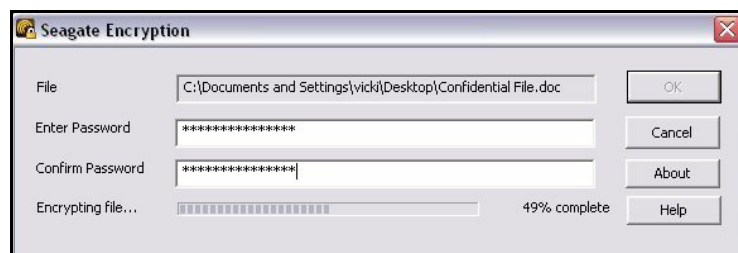
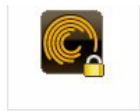


Figure 5: Encryption in Progress

When the window closes, an encrypted version of the file appears:



Confidential File.doc.ste

Figure 6: Encrypted File Logo

Step 5: Delete the original, unencrypted version of the file to complete the encryption process.

Decrypting a File

To decrypt a file,

Step 1: Double-click on the file

— OR —

Right-click on the file and select **Decrypt** from the dropdown menu:

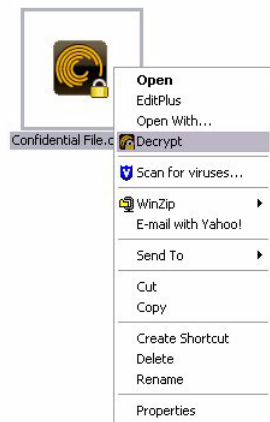


Figure 7: Decrypt Menu

The **Seagate Decryption** window opens:

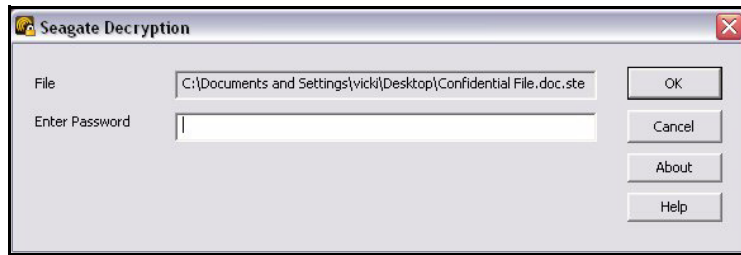


Figure 8: Seagate Decryption Window

Step 2: Enter the file password.

Step 3: Click **OK**.

A decrypted version of the file appears in the same location as the encrypted version, which remains on your computer.

If an unencrypted file with the same name exists in the location to which you are decrypting, you're asked permission to replace the existing version with this more current version:

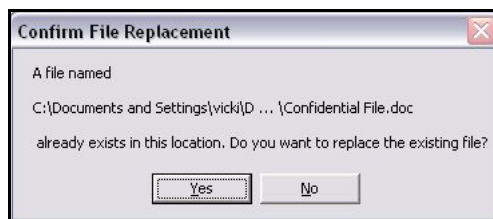


Figure 9: Decryption File Replacement

After you've edited the decrypted file, you can once again encrypt it.

Drag-and-Drop Encryption and Decryption

You can use right-click+drag to encrypt or decrypt a file as you're dragging it to a location on your computer. For example, you might want to encrypt a file you're moving to your portable drive or decrypt a file someone has shared with you as you drag it to a folder.

Note: You cannot Drag and Drop a file for encryption to a folder within Ceedo (for example, **My Documents**).

Using Drag and Drop to Encrypt

To encrypt a file as you're dragging it to a location on your computer,

Step 1: Right-click on the unencrypted file and drag it to the desired location.

As you drop the file in its new location, a Drag-and-Drop Encryption menu pops up:



Figure 10: Drag-and-Drop Encryption Menu

Step 2: Select **Encrypt**.

The **Seagate Encryption** window opens:

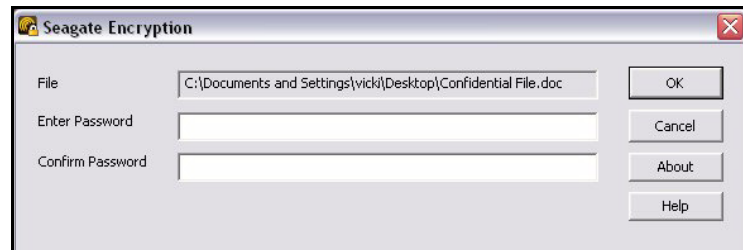


Figure 11: Seagate Encryption Window

Step 3: Enter and confirm your password and click **OK**.

If you've already encrypted this file before, the previously encrypted version remains on your computer. You're asked permission to replace the existing version with this more current version:

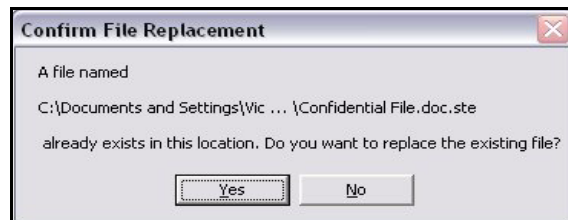


Figure 12: Encryption File Replacement

Step 4: Click **Yes**.

An encrypted version of the file appears in the new location.

Using Drag and Drop to Decrypt

To decrypt a file as you're dragging it to a location on your computer,

Step 1: Right-click on the encrypted file and drag it to the desired location.

As you drop the file in its new location, Drag-and-Drop Encryption menu pops up:



Figure 13: Drag-and-Drop Encryption Menu

Step 2: Select **Decrypt**.

The **Seagate Decryption** window opens:

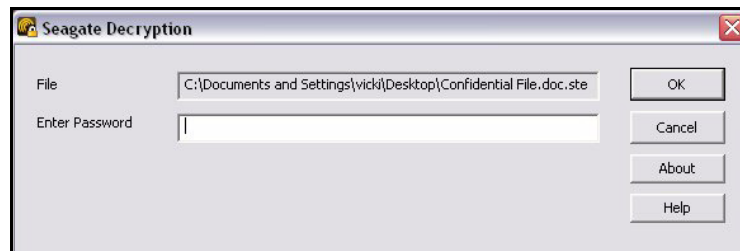


Figure 14: Seagate Decryption Window

Step 3: Enter your password and click **OK**.

If an unencrypted file with the same name exists in the location to which you are decrypting, you're asked permission to replace the existing version with this more current version:

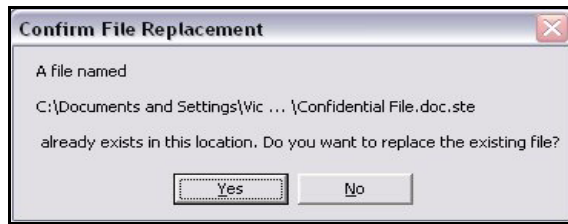


Figure 15: Decryption File Replacement

A decrypted version of the file appears in the new location.

Managing Your Drives

The **Your Drives** window provides a central point from which to manage your FreeAgent™ drives. It displays all FreeAgent portable and desktop devices connected to your computer:

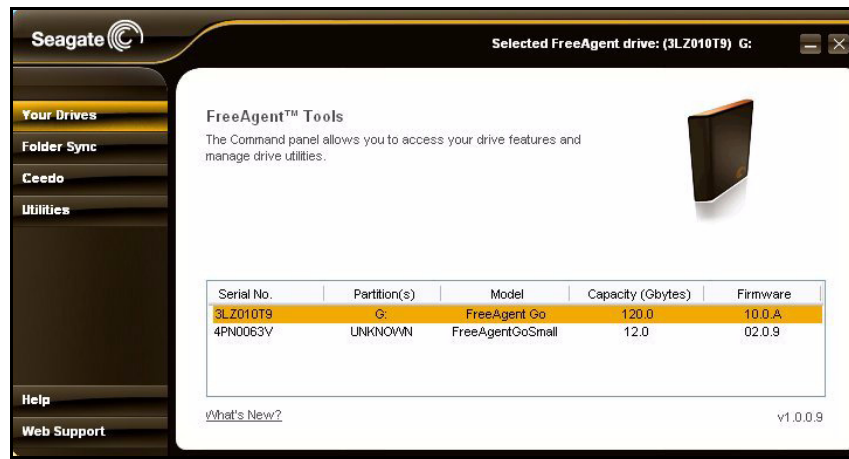


Figure 1: Your Drives

The Command panel allows you to access your drive features and manage drive utilities.

In the **Your Drives** window,

Step 1: Select a FreeAgent drive.

Step 2: Click an option in the Command panel.

Note: External drives are automatically detected and listed in the **Your Drives** window. It can take a few seconds for the FreeAgent software to detect your drive. If your drive doesn't appear, make sure it's properly connected and turned on.

Synchronizing Folders

You can configure Folder Sync rules that determine how and when your folders should be synchronized:

- Folders can be synchronized automatically each time a change is made, or you can synchronize folders manually.
- New files added to a synchronized folder on either your computer or your FreeAgent drive can be automatically copied to the corresponding synchronized folder in the other location, or you can instruct FreeAgent Tools to ask you each time the situation arises.
- Files in synchronized folders can be automatically replaced with new versions or you can instruct FreeAgent Tools to ask you each time the situation arises.

You have three options:

1. Use the default sync settings.
2. Select your own folders for Automatic Sync.
3. Select your own folders and configure your own sync rules.

Using the Default Sync Settings

If you select the default sync setting by clicking **Sync “My Documents”**, here’s what happens:

- Your **My Documents** folder is automatically synchronized from computer to FreeAgent drive each time you make a change.
- When you add a new file to the **My Documents** folder on your computer, a copy of the same file is automatically added to the corresponding folder on your FreeAgent drive. If you disconnect the FreeAgent drive from your computer and edit files in its **My Documents** folder on another computer, the **My Documents** folders on both your FreeAgent drive and your computer are updated when you re-connect your FreeAgent drive to your computer.
- Existing versions of files in synchronized folders are automatically replaced with new versions on both your computer and your FreeAgent drive.

To use the default Folder Sync settings,

Step 1: Open the Seagate FreeAgent Tools application:

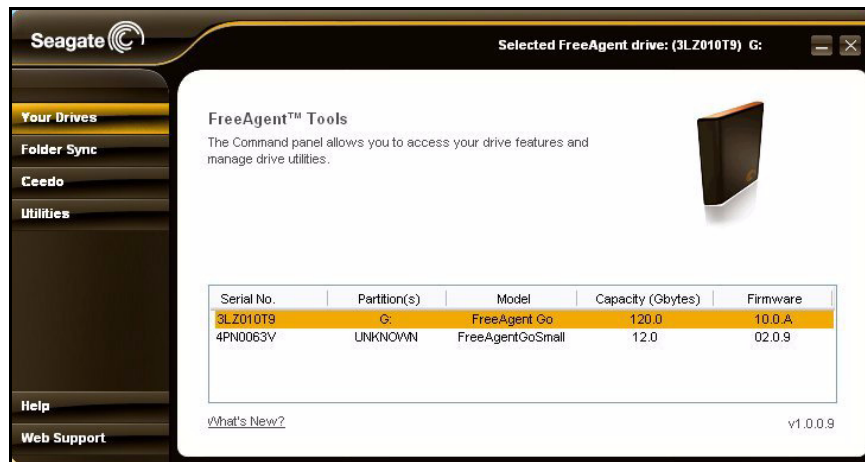


Figure 1: FreeAgent Tools

Step 2: Click **Folder Sync** in the Command panel.

The initial Folder Sync window opens:

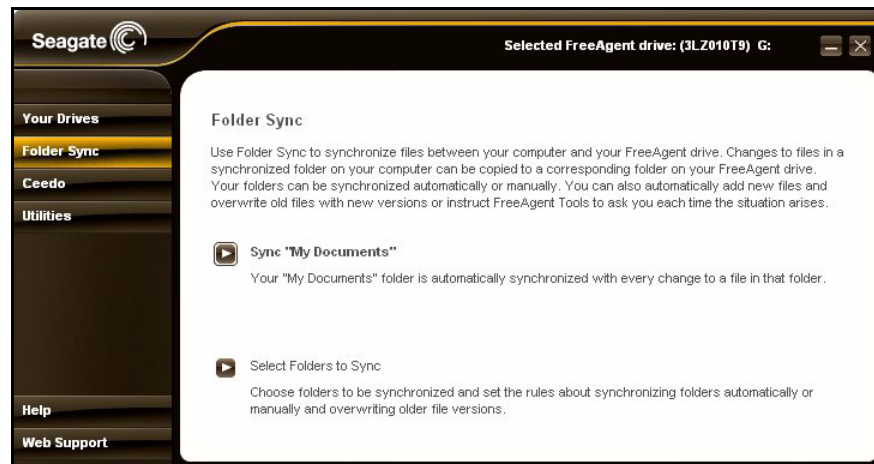


Figure 2: Initial Folder Sync

Note: This Folder Sync window appears only during your initial Folder Sync configuration.

Step 3: Click **Sync “My Documents”**.

The Folder Sync window opens:

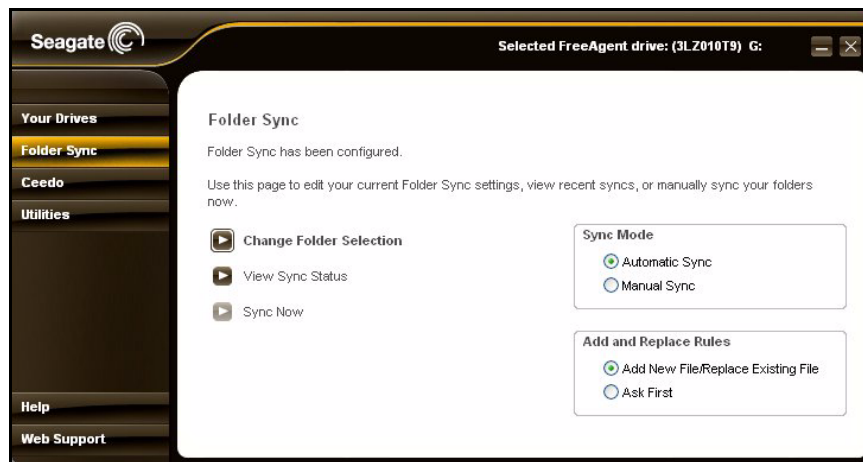


Figure 3: Folder Sync

Because you selected the default, Sync “My Documents”, your Folder Sync settings are automatically configured and saved and Folder Sync is started. You can now select another option on the Command panel.

Selecting Your Own Folders for Sync

To choose which folders to sync and configure the Folder Sync settings yourself,

Step 1: Click **Folder Sync** in the Command panel.

The initial Folder Sync window opens:

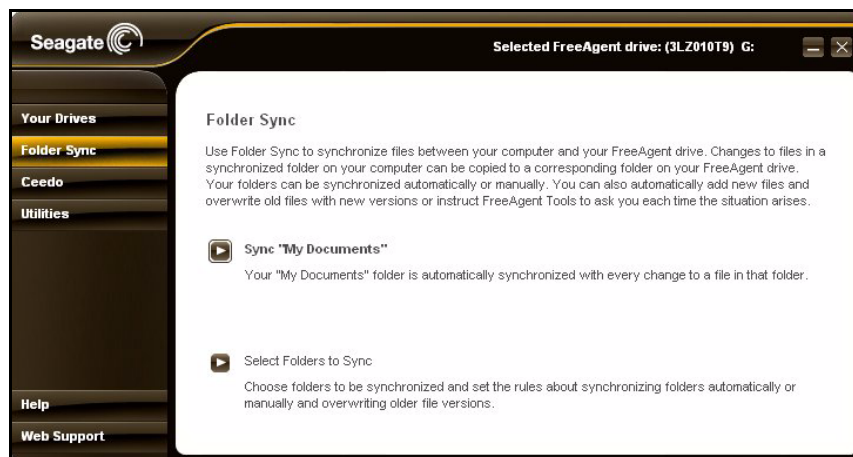


Figure 4: Initial Folder Sync

Step 2: Click **Select Folders to Sync**.

The Select Folders window opens:

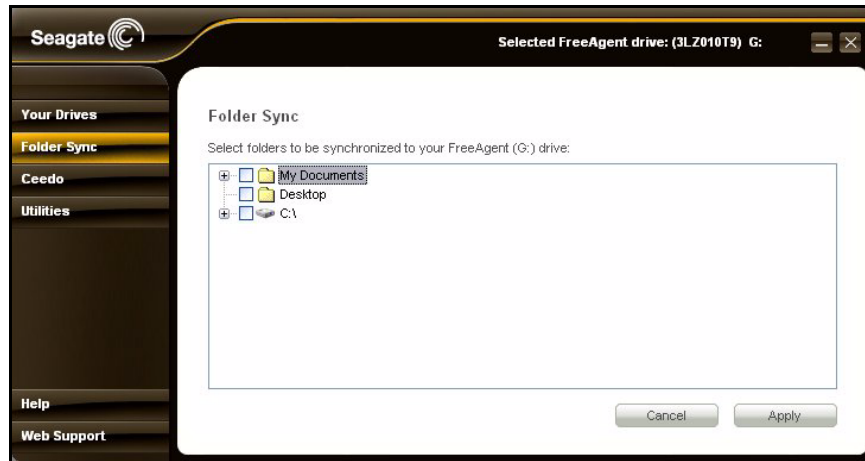


Figure 5: Select Folders

Step 3: Check the folders you want to sync and click **Apply**.

Folder Sync starts automatically.

The Folder Sync window opens:

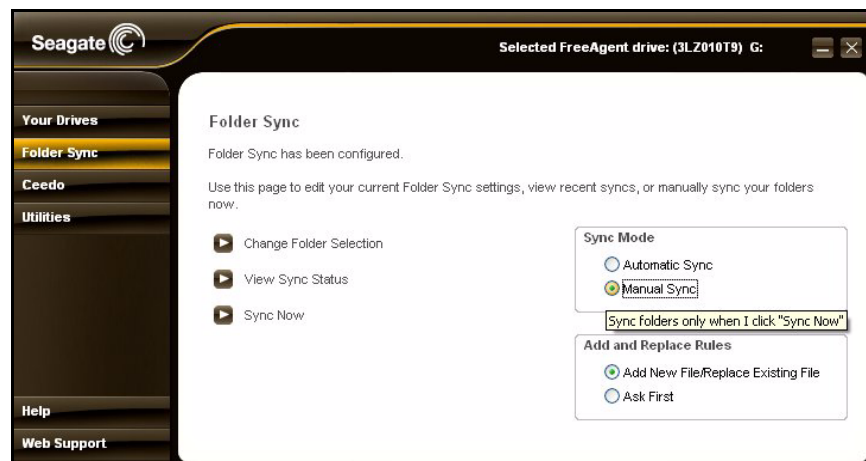


Figure 6: Folder Sync with Mouseover

Drag your mouse over the options for Sync Mode and Add and Replace Rules to see descriptions of the options:

Sync Mode

- **Automatic Sync:** Sync my folders automatically each time a file within them changes.
- **Manual Sync:** Sync my folders only when I click **Sync Now**.

Add and Replace Rules

- **Add New File/Replace Existing File:** Always add a new file to the synchronized folders on both my computer and my FreeAgent drive and replace an existing file with a new version.
- **Ask First:** Ask me before adding a new file or replacing an old file with a new version.

Step 4: Select the desired settings for **Sync Mode** and **Add and Replace Rules**.

Your selections are automatically saved and you can now select another option on the Command panel.

Editing your Sync Settings

To edit your Folder Sync settings,

Step 1: Click **Folder Sync** in the Command panel.

The Folder Sync settings screen opens:

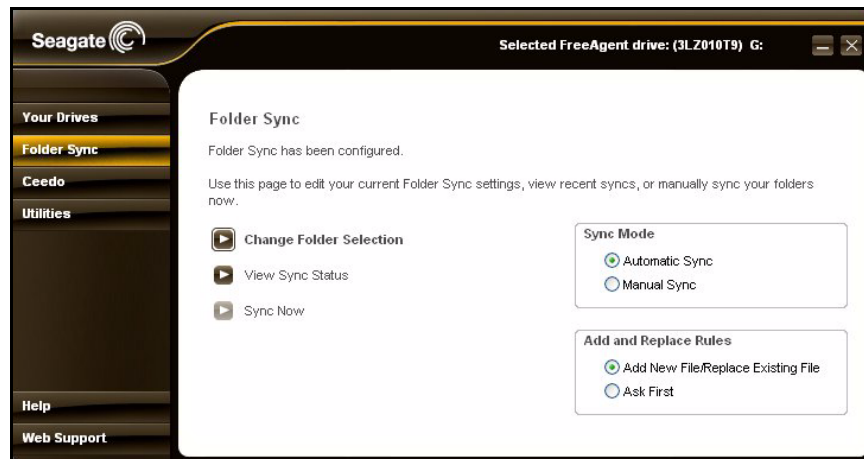


Figure 7: Folder Sync

Step 2: Select the setting you want to change.

Changing Folder Selection

If your current Sync Mode is **Manual Sync** and you select a new folder for sync or uncheck a selected folder, FreeAgent Tools resets the **Sync Mode** to **Automatic Sync**. The sync process starts immediately after you confirm your new folder selection and remains in **Automatic Sync** mode unless you change back to **Manual Sync**.

To change the folders currently selected for Folder Sync,

Step 1: Click **Change Folder Selection**.

The Select Folders window opens:

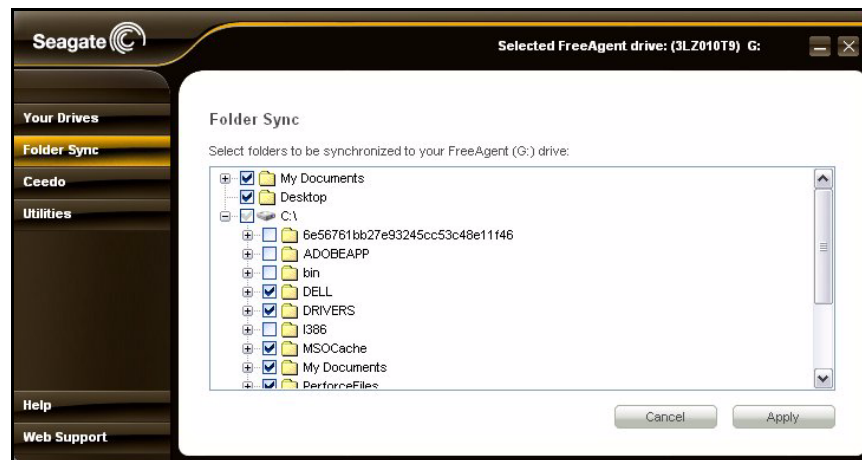


Figure 8: Select Folders

Folders currently selected for sync are checked.

Step 2: Uncheck folders or check additional folders and click **Apply**.

Folder Sync starts automatically for newly selected folders.

The Folder Sync window opens so you can change your Sync Mode and Add and Replace Rules settings.

Changing Sync Mode and Add and Replace Rules

To change your current sync mode setting,

Step 1: Click **Folder Sync** in the command panel.

The Folder Sync window opens:

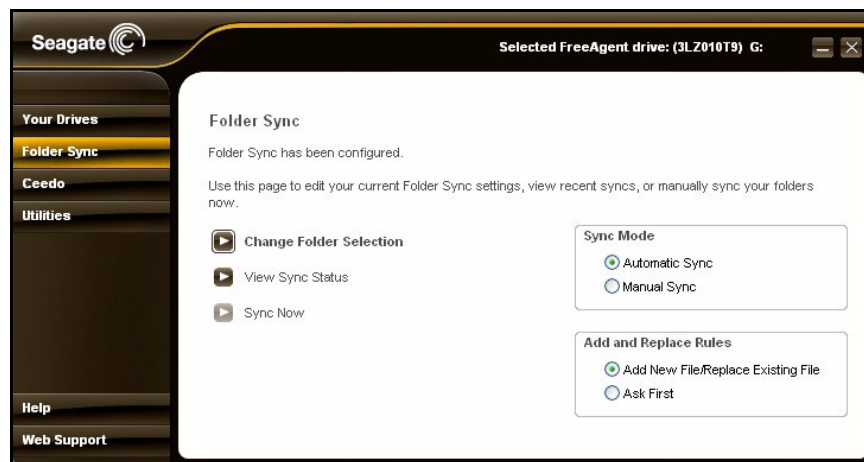


Figure 9: Folder Sync

Step 2: Make the desired selections for **Sync Mode** and **Add and Replace Rules**.

Your changes are automatically saved and you can now select another option on the Command panel.

Selecting “Ask First” for Add and Replace Rules

When you select **Ask First** for **Add and Replace Rules**, you’re instructing FreeAgent Tools to ask you before it

- adds a new file to a synchronized folder when you click **Sync Now** or re-connect your FreeAgent drive to a PC on which **Ask First** was previously selected.
- replaces a file on either your computer or your FreeAgent drive with a new version when you click **Sync Now** or re-connect your FreeAgent drive to a PC on which **Ask First** was previously selected.

Before adding a new file to a synchronized folder, FreeAgent Tools displays this window:

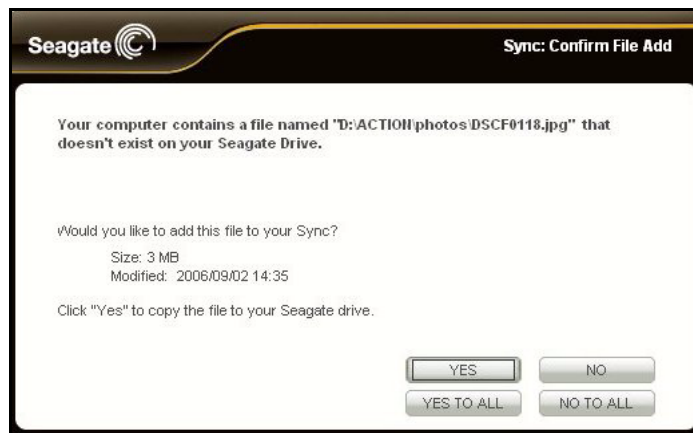


Figure 10: Add File

Before replacing an existing file in a synchronized folder with a new version, FreeAgent Tools displays this window:

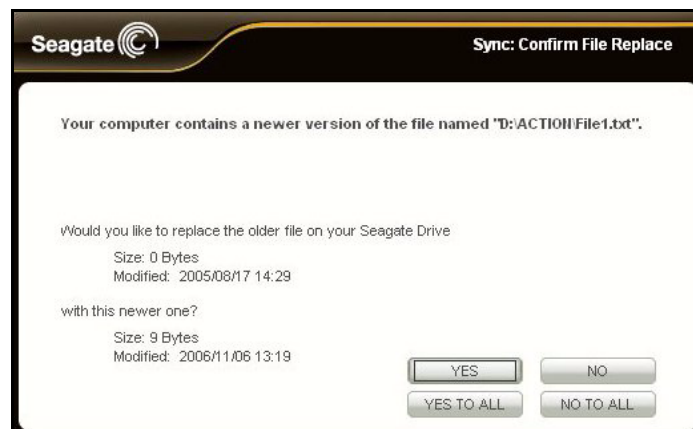


Figure 11: Replace File

YES or **NO** refers to adding or replacing this particular synchronized file.

YES TO ALL or **NO TO ALL** refers to adding or replacing all synchronized files and eliminates the need to display this window for all files in question for this sync.

Synchronizing Now Manually

The **Sync Now** option is inactive until you select **Manual Sync** for **Sync Mode**.

To synchronize your folders when you choose to rather than automatically,

Step 1: Click **Folder Sync** in the command panel.

The Folder Sync window opens:

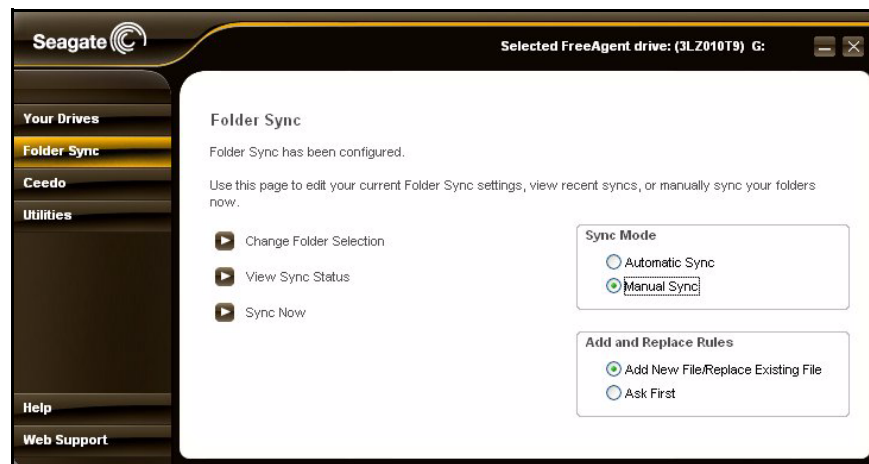


Figure 12: Folder Sync-Manual

Step 2: For **Sync Mode**, select **Manual Sync**.

The Sync Now option is activated.

Step 3: Click **Sync Now**.

Your folders are synchronized immediately.

Note: Remember that when you select **Manual Sync** for **Sync Mode**, your files will sync only when you click **Sync Now**; they will no longer automatically sync.

Viewing Sync Status

To see the status of folders currently selected for sync,

Step 1: Click **Folder Sync** in the command panel.

The Folder Sync window opens:

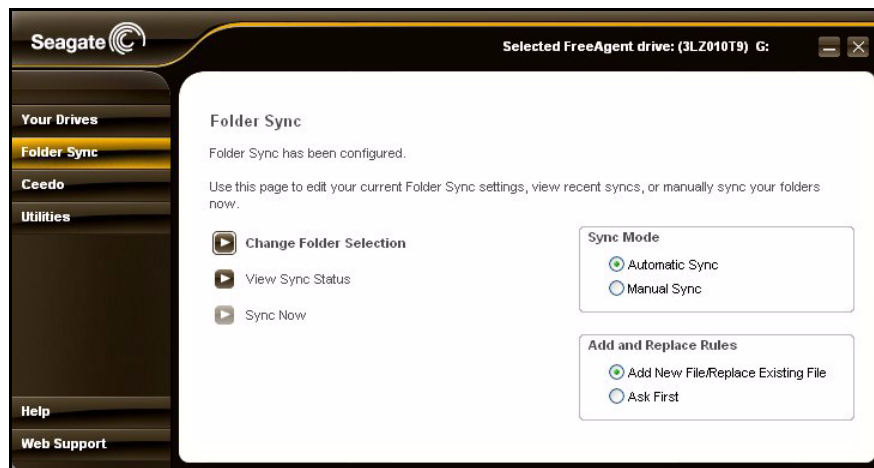


Figure 13: Folder Sync

Step 2: Click **View Sync Status**.

The Sync Status window opens:

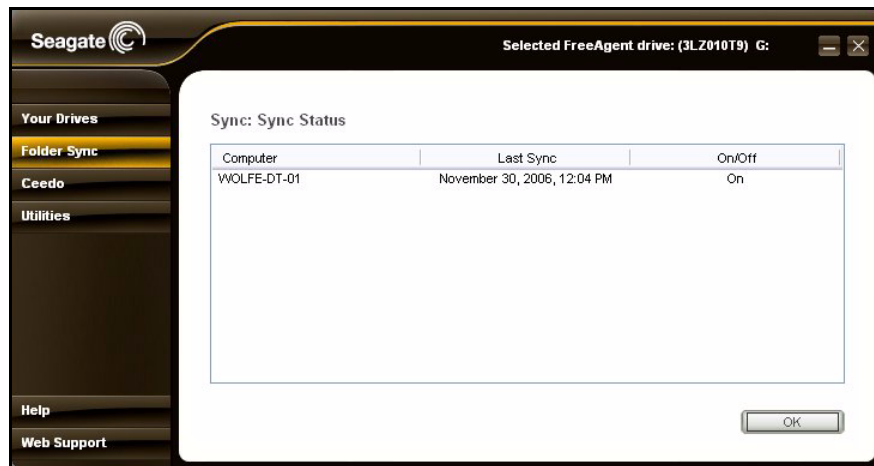


Figure 14: Sync Status

Listed are the computers to which this FreeAgent drive is synchronized, the date and time of the last sync, and the current On/Off status of Automatic Sync.

Step 3: Click **OK** to return to the **Folder Sync** window.

Accessing your Synchronized Folders

You can use Folder Sync to synchronize folders between one computer and your FreeAgent drive. *But even though you can't use your FreeAgent drive to synchronize*

folders between your computer and a second computer, you can connect the FreeAgent drive to a second computer to work on synchronized files stored on the FreeAgent drive. Then, when you again connect the FreeAgent drive to the computer with which it's synchronized, the file changes are saved to the synchronized folder on the computer.

Your synchronized folders are located on the FreeAgent drive in the **FreeAgent Sync** folder.

To access your synchronized folders,

Step 1: In your **My Computer** window, right-click on the FreeAgent drive and select **Explore**:

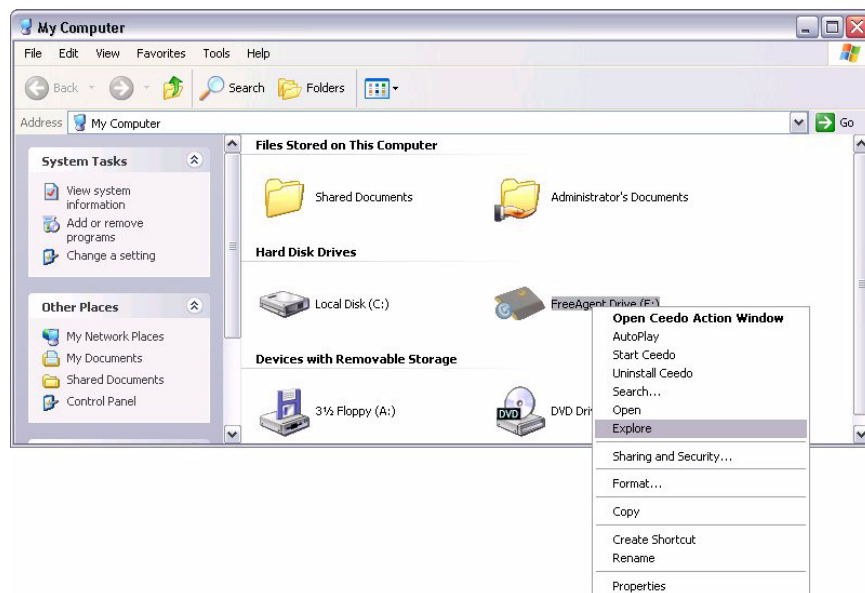


Figure 15: My Computer

Note: The drive letter will vary; in the image above, the FreeAgent drive is connected as Drive E.

The FreeAgent Drive Explorer window opens:

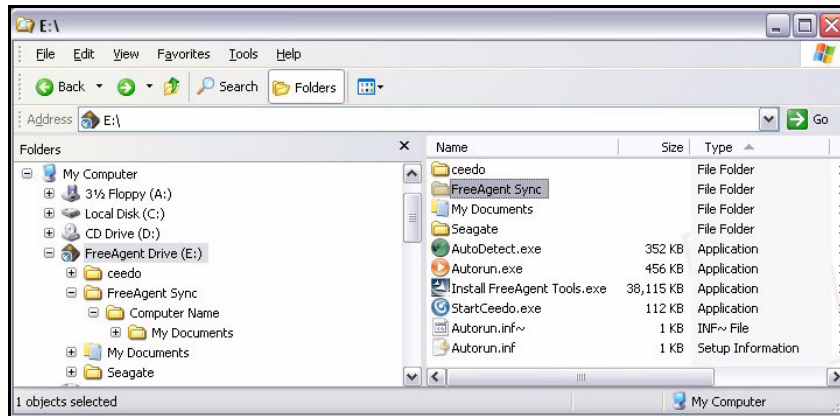


Figure 16: FreeAgent Drive Folder Sync Location 1

Note: These windows will vary depending upon your operating system. The windows shown here are from Windows XP.

Step 2: Open the **FreeAgent Sync** folder:

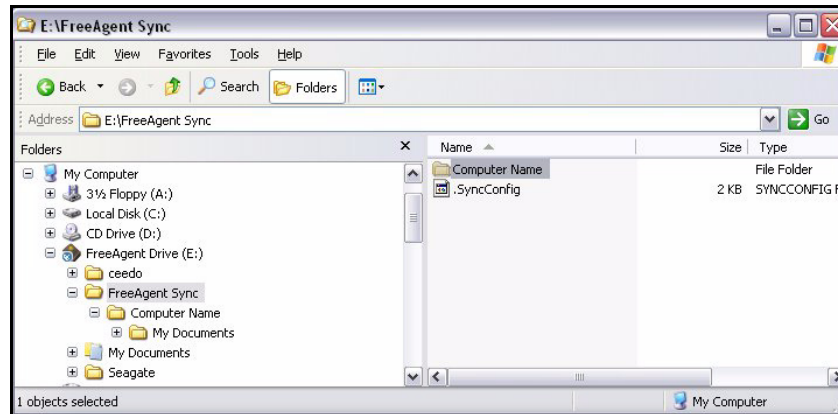


Figure 17: FreeAgent Drive Folder Sync Location 2

Stored in the FreeAgent Sync folder is a folder with your computer name (in the image above, named Computer Name).

Step 3: Open the <Computer Name> folder:

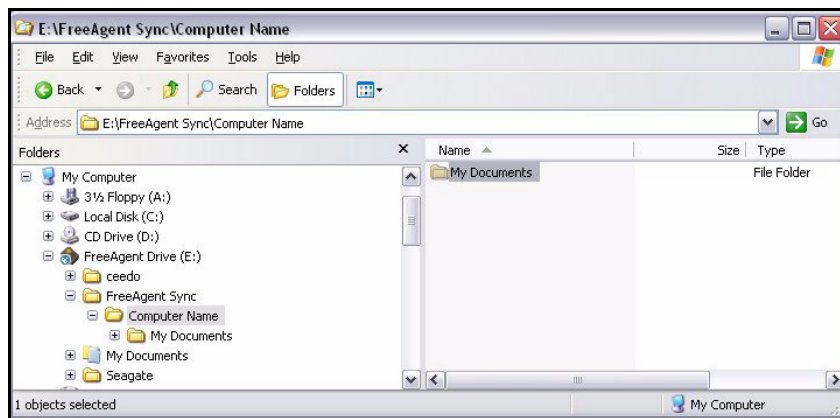


Figure 18: FreeAgent Drive Folder Sync Location 3

Inside the <Computer Name> folder are your synchronized folders.

In the example images above, the path to the synchronized folders on this FreeAgent drive is E:\FreeAgent Sync\Computer Name\My Documents.

Using Ceedo

Ceedo provides a portable working environment that allows you to carry your programs, documents, email, and browser with you on your FreeAgent™ portable drive and run them on any computer.

The Ceedo software is pre-installed on your FreeAgent drive.

Note: *If you are unable to access the Ceedo Easy-Access menu, you may have a firewall conflict. For further information and assistance, go to <http://www.ceedo.com/>.*

Using Ceedo for the First Time

The first time you connect your FreeAgent drive, you must choose a language and accept the Ceedo license agreement.

Step 1: Connect your FreeAgent drive.

The AutoStart window opens:



Figure 1: FreeAgent AutoStart Window

Step 2: Select **Start Ceedo** and click **OK**.

The Ceedo Welcome window opens:



Figure 2: Ceedo Welcome Window

Step 3: Select your language from the dropdown menu and click **OK**.

The Ceedo License Agreement window opens:

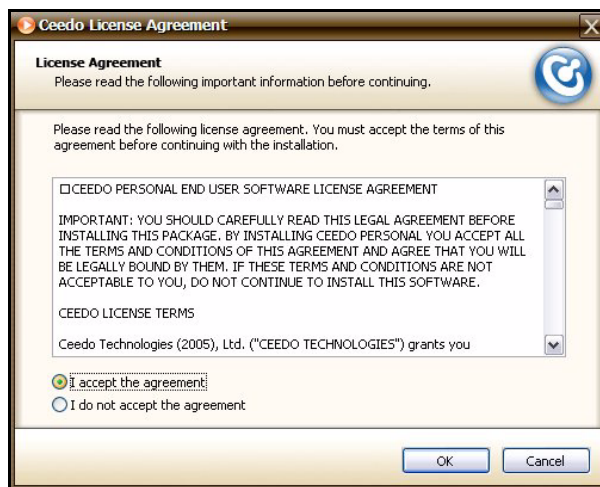


Figure 3: Ceedo License Agreement

Step 4: Select **I accept the agreement** and click **OK**.

If Ceedo has released a more current version of its software than the version installed on your FreeAgent drive, a Ceedo Update window opens:



Figure 4: Update Ceedo

Step 5: If you wish, click **Learn more about this update**.

You're directed to the Ceedo Release Notes page on the Ceedo website:

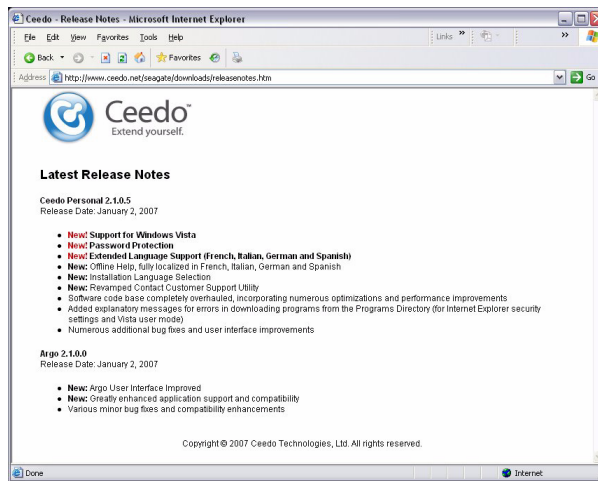


Figure 5: Ceedo Update Release Notes

Step 6: Close the browser window.

Step 7: In the Update Ceedo window, click **Yes** to install the latest version of Ceedo.

The **Installing Ceedo** window opens:



Figure 6: Installing Ceedo

When the updated Ceedo software has been installed, the **Loading Ceedo** window opens:

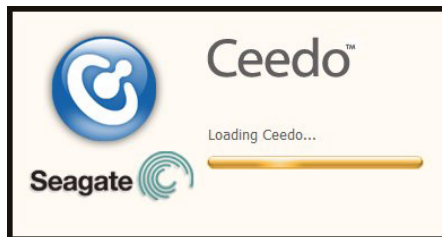


Figure 7: Loading Ceedo

When Ceedo has loaded, the **Welcome to Ceedo** window and the Ceedo Easy-Access menu both open:



Figure 8: Welcome to Ceedo

The **Welcome to Ceedo** window describes the various features Ceedo provides. You can choose whether to display this window each time you open Ceedo.

Step 8: If you don't want to see this screen again, uncheck **Show the Welcome screen when Ceedo starts** at the bottom of the window.

The Ceedo Easy-Access menu provides access to the programs, documents, email, and browsers you install in Ceedo:

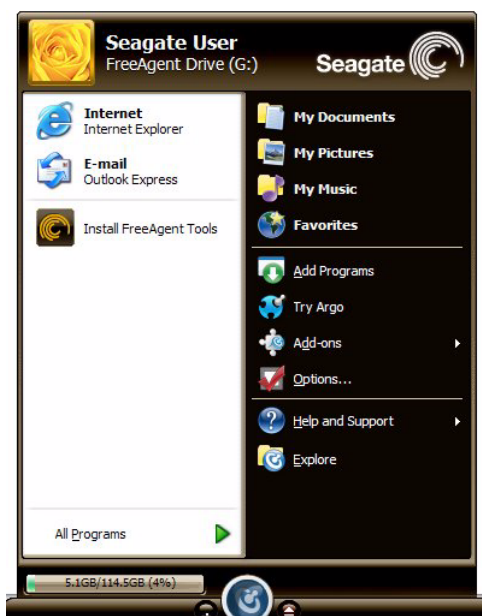


Figure 9: Ceedo Easy-Access Menu

Note: If you're unable to access the Ceedo Easy-Access menu links, you may have a firewall conflict. For further information and assistance, go to <http://www.ceedo.com/>.

Using the Ceedo Application

Provided here is some basic information about using Ceedo. For complete information on all the features available in Ceedo, visit the Ceedo website at <http://www.ceedo.com>.

Using the Ceedo Compact Bar

When you're not using Ceedo, the Easy-Access menu collapses to a Compact Bar that remains on the bottom of your screen:



Figure 10: Ceedo Compact Bar

You can control the Compact Bar:

- Drag the Compact Bar to move it to the left or right at the bottom of your screen.

- Click the blue Ceedo icon at the center of the Compact Bar to expand or collapse the Ceedo Easy-Access menu.
- Click the Minimize button to the left of the Ceedo icon to minimize the Compact Bar to your system tray.
- Click the Ceedo icon in your system tray to return the Compact Bar to the bottom of your screen.
- Click the Eject button to the right of the Ceedo icon to safely remove your FreeAgent drive. (You can also eject Ceedo by selecting **Eject** from the Ceedo popup menu in your system tray or clicking the **Safely Remove Hardware** icon.)

Using the Ceedo System Tray Icon

When Ceedo has been launched, a blue Ceedo icon appears in your system tray.

Step 1: Move your mouse over the icon to see information about how to launch Ceedo if the desktop Easy-Access menu is not open:

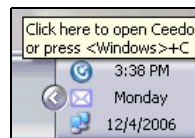


Figure 11: Ceedo System Tray Icon

Step 2: Right-click on the icon in the system tray to open the Ceedo system tray menu:

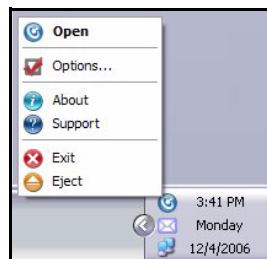


Figure 12: Ceedo System Tray Popup Menu

Use these menu options for full access to Ceedo's features:

- Open the Ceedo Easy-Access menu.
- Set preferences in the Ceedo **Options** window:

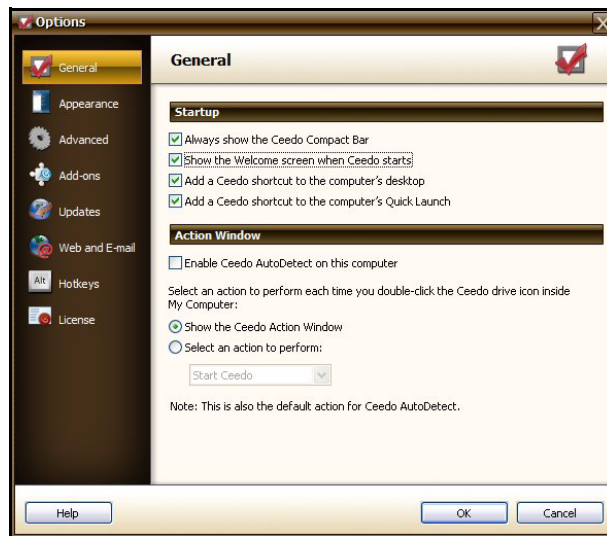


Figure 13: Ceedo Options Window

- View information about your version of Ceedo:

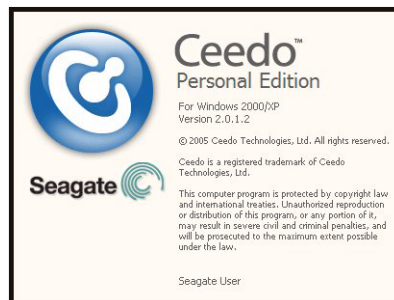


Figure 14: About Ceedo

- Go to the Ceedo Support web page.
- Exit Ceedo.
- Eject Ceedo for safe removal of your FreeAgent drive.

Ceedo automatically closes all running windows, programs, web pages, and folders when it shuts down. If a program cannot be closed for some reason, Ceedo displays a standard message window to allow you to manually close the program or to stop trying to close the program. Ceedo will not shut down until all windows, programs, web pages, and folders have been closed.

Distinguishing a Ceedo Window

Ceedo windows are enclosed in an orange border to make it easy for you to distinguish between a Ceedo program window and a window on your local computer. For example, here's what a web browser window opened from Ceedo looks like:

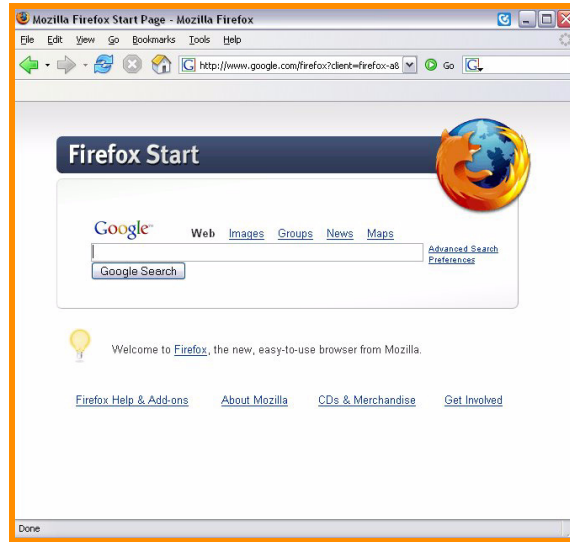


Figure 15: Ceedo Window

For further information about or help with Ceedo, visit <http://www.ceedo.com>.

Utilities

Use the **Utilities** window to run drive diagnostics and adjust the drive sleep interval on FreeAgent™ portable drives and to adjust the drive lights on your FreeAgent Go drive.

Note: The lights on the FreeAgent Go Small drive cannot be adjusted.

Running Drive Diagnostics

You should run a diagnostic on your drive regularly as part of general maintenance. A health check determines hard disk integrity and can help troubleshoot potential problems with disk surface, partitioning, and drive recognition.

To run a drive diagnostic,

Step 1: Close all open files located on the FreeAgent drive.

Step 2: Click **Utilities** on the Command panel.

The **Utilities** window opens:

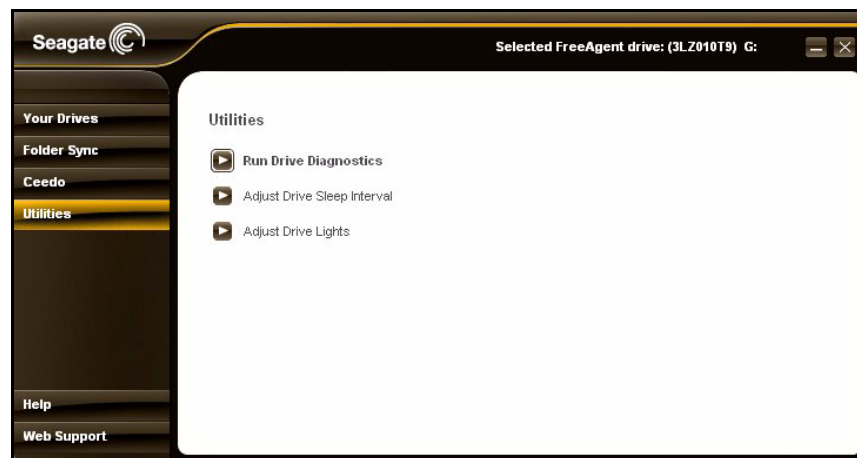


Figure 1: FreeAgent Go Utilities

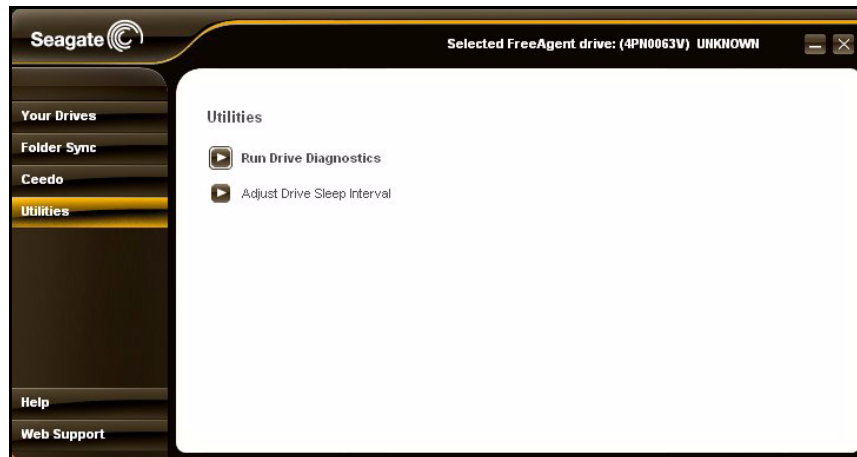


Figure 2: FreeAgent Go Small Utilities

Step 3: Click **Run Drive Diagnostics**.

The **Run Drive Diagnostics** window opens:



Figure 3: Run Drive Diagnostics

Step 4: Click **Test** to begin the drive diagnostic.

The diagnostic utility performs its tests without affecting the data on your drive and takes only a short time to complete.

When the test is complete, the **Utilities** window displays the results:

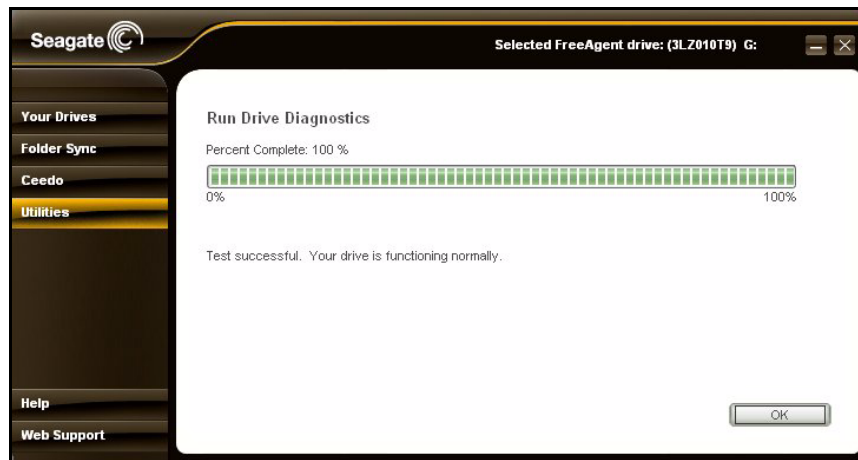


Figure 4: Diagnostics Report

If the drive encounters an error during testing, the window displays an error code with instructions to contact Seagate for service and support.

Step 5: Click **OK** to return to the **Utilities** window

Adjusting the Drive Sleep Interval

You can choose how long your FreeAgent drive should remain inactive before it goes into power-saving mode.

To adjust the drive sleep interval,

Step 1: Click **Utilities** on the Command Pane.

The **Utilities** window opens:

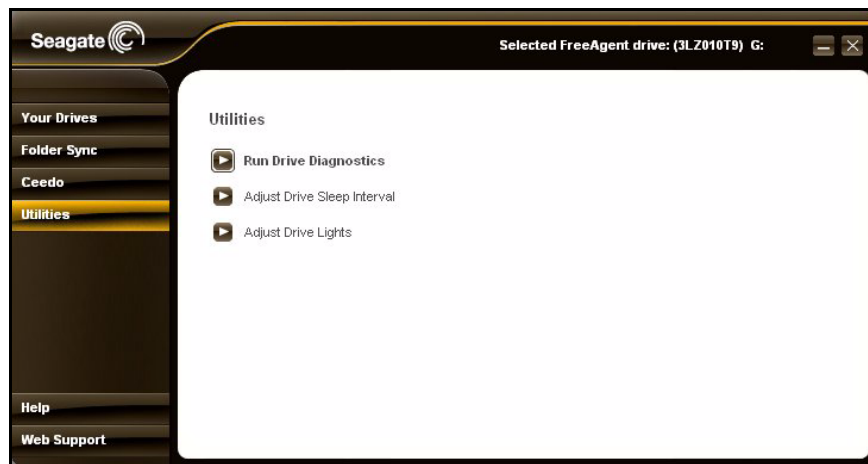


Figure 5: Drive Utilities

Step 2: Click **Adjust Drive Sleep Interval**.

The **Adjust Drive Sleep Interval** window opens:

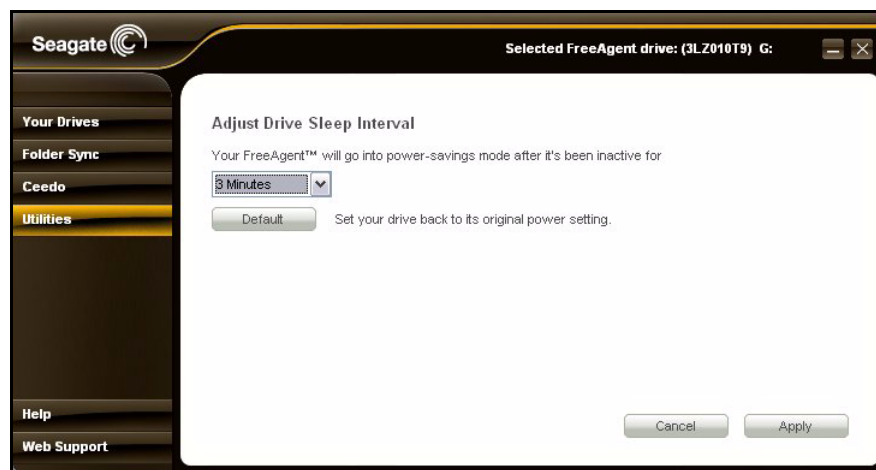


Figure 6: Adjust Drive Sleep Interval

Step 3: Select an interval from the dropdown menu or click **Default** to return to the default interval setting of three minutes.

Step 4: Click **Apply** to save the Drive Sleep Interval setting.

The **Adjust Drive Sleep Interval** window confirms that the power setting for your drive has been changed:

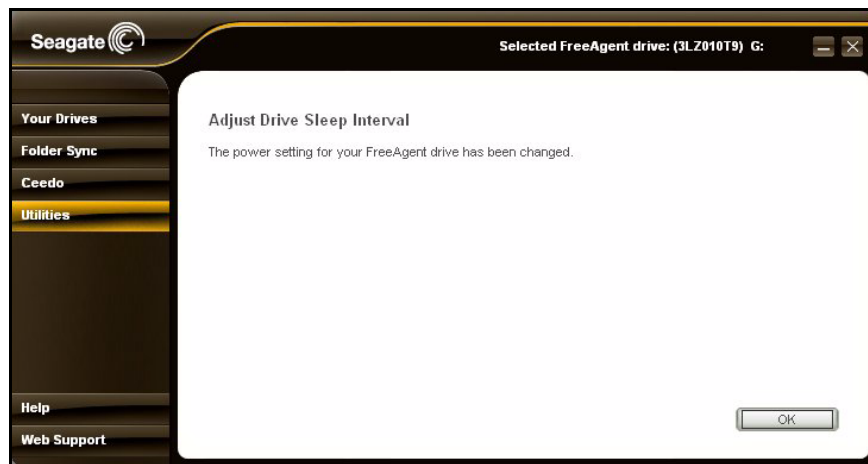


Figure 7: Power Setting Confirmation

Step 5: Click **OK** to return to the **Utilities** window.

Adjusting the Drive Lights

The lights on the FreeAgent Go drive flicker to indicate drive activity and status. You can turn these lights off if you wish.

Note: The lights on the FreeAgent Go Small drive are not adjustable, so the **Adjust Drive Lights** option does not appear in its **Utilities** window.

To adjust the drive lights,

Step 1: Click **Utilities** on the Command Pane.

The **Utilities** window opens:

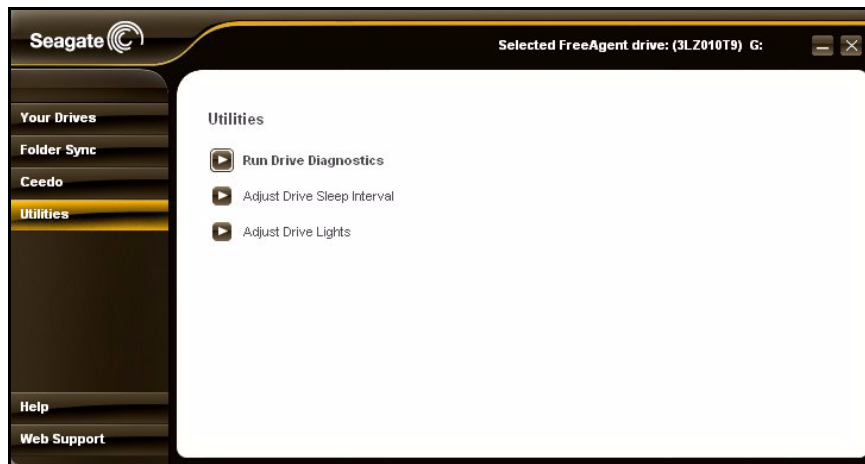


Figure 8: Drive Utilities

Step 2: Click **Adjust Drive Lights**.

The **Drive Lights** window opens:

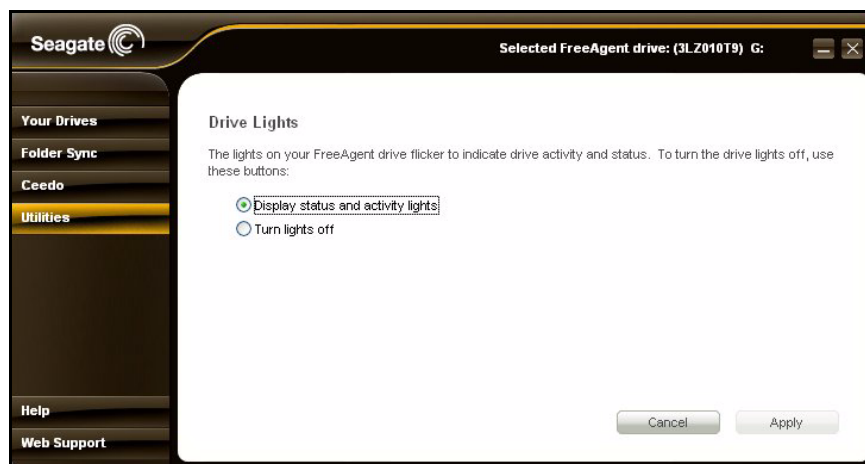


Figure 9: Adjust Drive Lights

Step 3: Choose whether to display status and activity lights on your FreeAgent drive.

Step 4: Click **Apply** to return to the **Utilities** window.

Index

A

Accessing your Synchronized Folders *29*

Adjusting the Drive Lights *45*

Adjusting the Drive Sleep Interval *43*

C

Ceedo

 Using the Ceedo Application *37*

Ceedo Application *37*

 Distinguishing a Ceedo Window *40*

 Using the Ceedo Compact Bar *37*

 Using the Ceedo System Tray Icon *38*

Ceedo Compact Bar *37*

Ceedo Easy-Access Menu *5*

Ceedo System Tray Icon *38*

Ceedo Welcome Window *3*

Changing Folder Selection *25*

Changing Sync Mode and Add and Replace Rules *25*

Creating a Password *12*

D

Decrypting a File *15*

Default Sync Settings *20*

Disconnecting the FreeAgent Drive *10*

Distinguishing a Ceedo Window *40*

Drag-and-Drop Decryption *17*

Drag-and-Drop Encryption *16*

Drag-and-Drop Encryption and Decryption *16*

 Using Drag and Drop to Decrypt *17*

 Using Drag and Drop to Encrypt *16*

E

Editing your Sync Settings *24*

 Changing Folder Selection *25*

 Changing Sync Mode and Add and Replace Rules *25*

 Selecting “Ask First” for Add and Replace Rules *26*

Encrypting a File *13*

F

File Encryption *12*

 Creating a Password *12*

 Decrypting a File *15*

 Drag-and-Drop Encryption and Decryption *16*

 Encrypting a File *13*

FreeAgent Tools Icons *9*

 Using the System Tray Icon *10*

FreeAgent Tools System Tray Icon *10*

G

Getting Started *1*

 Disconnecting the FreeAgent Drive *10*

 Installing the FreeAgent Tools *1*

 Using the FreeAgent Tools Icons *9*

I

Installing the FreeAgent Tools *1*

M

Managing Your Drives *19*

R

Running Drive Diagnostics *41*

S

Selecting “Ask First” for Add and Replace Rules *26*

Selecting Your Own Folders for Sync *22*

Synchronizing *20*

Synchronizing Folders *20*

 Accessing your Synchronized Folders *29*

 Editing your Sync Settings *24*

 Selecting Your Own Folders for Sync *22*

 Synchronizing Now Manually *28*

 Using the Default Sync Settings *20*

 Viewing Sync Status *28*

Synchronizing Now Manually *28*

U

Using Ceedo *33*

Using Ceedo for the First Time *33*

Utilities and Diagnostics *41*

 Adjusting the Drive Lights *45*

 Adjusting the Drive Sleep Interval *43*

 Running Drive Diagnostics *41*

V

Viewing Sync Status 28

070131